

SX9 SERIES SCREW COVER JUNCTION BOXES



INDUSTRY STANDARDS

UL 1203 listed; File No. E468486
cUL File No. E468486
Class I, Group C, D
Class II, Group E, F, G

NEMA Type 3, 4X, 7, 9
NEC Art 500-503

APPLICATION

SX9 Series Junction Boxes are UL certified. They have a screw cover and are used either as junction boxes with/without terminals or for installation of electrical equipment such as fuses, relays, disconnectors, remote control switches, transformers, ballast, etc. Body and cover can be drilled and threaded according to customers' specification.

SPECIFICATIONS

- Body and cover constructed of low copper content aluminum alloy
- Internal/external stainless steel earth screws
- Mounting panel and mounting screws included
- Gasket between body and cover

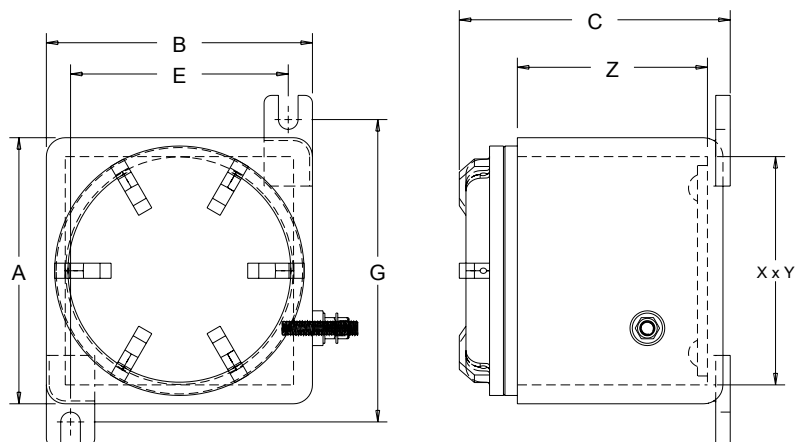
FINISH

RAL 7031 electrostatic polyester paint

BULLETIN: HL5U

Standard Product

Catalog Number	AxBxC in./mm	E in./mm	G in./mm	X in./mm	Y in./mm	Z in./mm	Panel Dimensions in./mm	Weight (lb.)	Weight (kg)
SX9GUB1A	6.93 x 6.93 x 7.09	5.67	7.87	6.30	6.30	3.94	5.12 x 5.12	14.55	7
	176 x 176 x 180	144	200	160	160	100	130 x 130		
SX9GUB2A	9.68 x 8.74 x 7.87	10.00	8.23	8.11	8.11	4.13	7.09 x 5.91	21.16	10
	246 x 222 x 200	254	209	206	206	105	180 x 150		
SX9GUB3A	11.81 x 10.63 x 9.45	11.54	10.67	10.75	9.57	4.53	9.25 x 8.66	39.01	18
	300 x 270 x 240	293	271	273	243	115	235 x 220		



89119670

