

BROWSER COMPATIBILITY

For best experience use one of the following compatible browsers

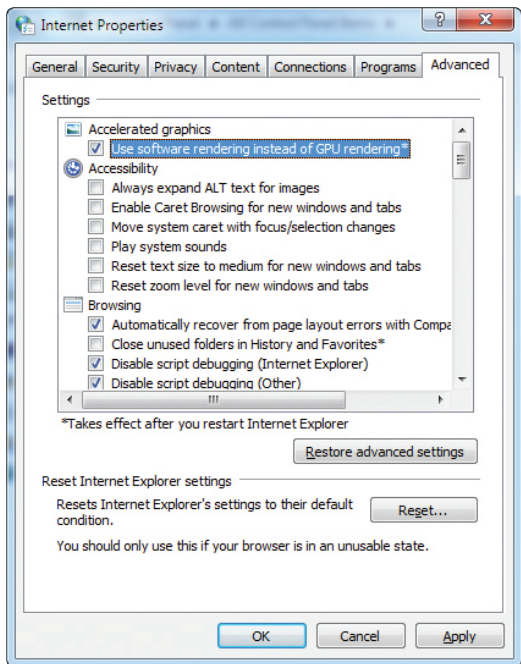
- Google Chrome
- Microsoft Edge on Windows 10
- Firefox
- Microsoft IE11 on Windows 10

Microsoft IE11 may encounter graphics rendering issues

- May require internet setting change see <https://support.microsoft.com/en-us/kb/2528233>

Or follow the instructions below to fix it yourself:

1. Open Internet Explorer.
2. Click the Tools icon in the upper-right corner, and then click Internet Options.
3. Click the Advanced tab, and then under Accelerated graphics, select the “Use software rendering instead of GPU rendering” check box.



4. Click Apply, and then click OK.
5. Close Internet Explorer and then restart it so that the change takes effect.
6. Graphics are not supported under Microsoft browsers older than IE11
 - o Basic functionality of selections will be available, but without graphics

For additional support or comments, please contact us at configuratorsupport@nvent.com