

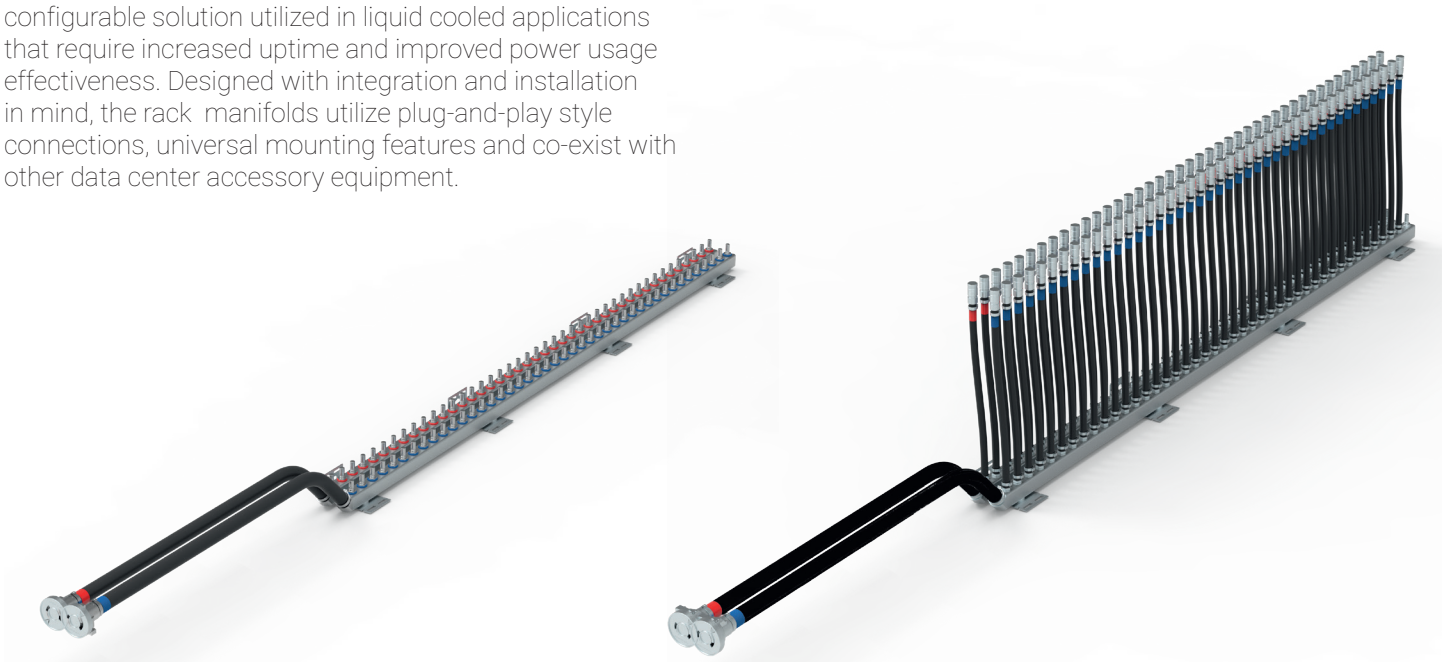
RackChiller Rack Manifolds



CONFIGURABLE SOLUTION FOR LIQUID COOLED APPLICATIONS

BEST-IN-CLASS TECHNOLOGY TO DELIVER LIQUID COOLING TO HIGH HEAT LOAD APPLICATIONS

The nVent HOFFMAN RackChiller Rack Manifolds are a configurable solution utilized in liquid cooled applications that require increased uptime and improved power usage effectiveness. Designed with integration and installation in mind, the rack manifolds utilize plug-and-play style connections, universal mounting features and co-exist with other data center accessory equipment.



FEATURES

- Delivers water-based coolant from Coolant Distribution Unit (CDU) or facility manifolds to cold plate equipment
- Two major configurations available
 - Standard configuration uses jumper hoses to connect manifold to cold plate equipment (jumper hoses sold separately)
 - Hose-whip configuration connects directly to cold plate equipment utilizing hose-whips attached directly to the manifold
- Various dripless, quick disconnect connectors available to match existing cold plate equipment
- Button-style mounting to be used with universal mounting brackets (also used with nVent RackPower intelligent power distribution units)

BENEFITS

- Increases data up-time
- Extends server equipment life span
- Improves data center power usage effectiveness, providing annual return on investment
- Multiple connectivity options to match downstream cooling equipment needs
- Plug-and-play style installation
- Universal mounting features to co-exist with other rack accessory equipment (i.e. PDU's, cable management, airflow management, etc)
- Two major configurations designed to service alternate secondary cooling loop products

SPECIFICATIONS

- 1.5" x 1.5" extruded stainless steel construction
- Friction-drilled, ORB-6 port threads
- Standard manifolds utilize Parker NSP-06 quick disconnect connectors
- Eaton FD-83 supply/return ball valve connector

FINISH

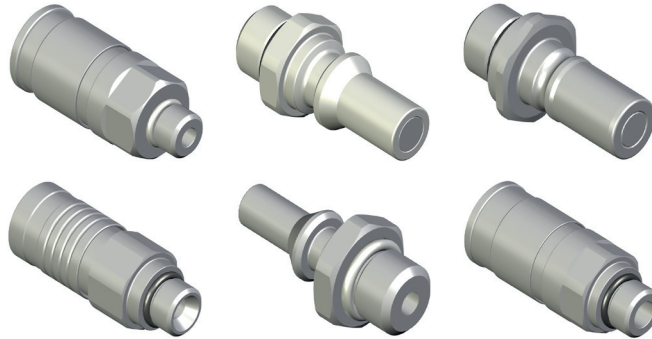
- Passivated stainless steel

MANIFOLDS CONFIGURATION ATTRIBUTES

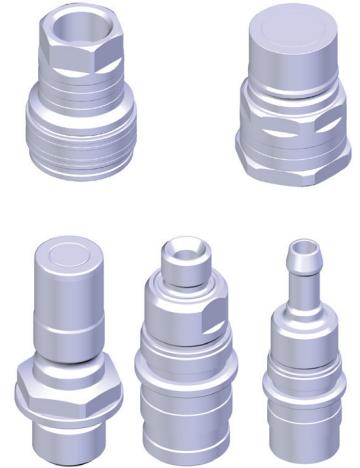
| Configuration | Rack size (U) | Max. ports number | Populated ports | Connector type | Hose whip length (in) | Supply/return hose length (in) | Supply/return connector |
|---------------|---------------|-------------------|-----------------|----------------------|-----------------------|--------------------------------|-----------------------------|
| Standard | 42 | Up to 36 | 18 | Parker NSP06 socket | 8 | 24 | Eaton FD83 ball valve |
| Hose-whip | 48 | Up to 42 | 24 | Parker NSP06 plug | 12 | 36 | Staubli CGB20 quick connect |
| | 52 | | 36 | Staubli SCG06 socket | 18 | 48 | |
| | | | 42 | Staubli SCG06 plug | 24 | 60 | |
| | | | | UQD04 socket | | | |
| | | | | UQD04 plug | | | |



EATON



PARKER



STAUBLI

North America

Minneapolis, MN
Tel: +1.763.421.2240
Mexico City, Mexico
Tel: +52.55.5280.1449
Toronto, Canada
Tel: +1.416.289.2770

South America

Sao Paulo, Brazil
Tel: +55.11.5184.2100
Boituva, Brazil
Tel: +55.15.3363.9148

Europe

Betschdorf, France
Tel: +33.3.88.90.64.90
Straubenhardt, Germany
Tel: +49.7082.794.0
Dzierzoniow, Poland
Tel: +48.74.64.63.900
Lainate, Italy
Tel: +39.02.932.7141

Middle East & Africa

Dubai, United Arab Emirates
Tel: +971.4.378.1700
Bangalore, India
Tel: +91.80.6715.2001

Asia

Shanghai, P.R. China
Tel: +86.21.2412.6943
Singapore
Tel: +65.6768.5800
Shin-Yokohama, Japan
Tel: +81.45.476.0271
Seoul, Korea
Tel: +82.2.2129.7755
Qingdao
Tel: +86.532.8771.6101



Our powerful portfolio of brands:

nVent.com

CADDY ERICO HOFFMAN RAYCHEM SCHROFF TRACER