

**FREE-STAND, TYPE 12**



**INDUSTRY STANDARDS**

UL 508A Listed; Type 12; File No. E61997  
 cUL Listed per CSA C22.2 No 94; Type 12; File No. E61997

NEMA/EEMAC Type 12  
 E.I.A. RS-310-D  
 CSA File No. 42186: Type 12  
 IEC 60529, IP55

**APPLICATION**

Designed to house systems incorporating large components or complex mounting configurations. Three-point latching and sealing provide industry-leading protection from dust, dirt, oil and water. These enclosures are used in machine tool applications for housing motor starters, drives, contactors and PLCs, as well as a wide variety of other electrical and electronic equipment. The addition of 19-in. rack-mounting accessories makes these enclosures ideal for providing rugged protection for sensitive rack-mounted components in harsh industrial environments. These enclosures are used extensively in automotive, pulp and paper, wood products, textile and similar industries.

**SPECIFICATIONS**

- 12 gauge Type 304 stainless steel
- Seams continuously welded and ground smooth; no holes or knockouts
- Stiffeners welded to back of enclosures maintain flatness and increase rigidity
- Heavy-duty lifting eyes are Type 316 stainless steel
- Plated steel 3-point latching and keylocking handle
- Heavy-gauge continuous hinges support each door
- Data pocket, provided on door(s) with 3-point latches, is high-impact thermoplastic
- Mounting channels welded horizontally to interior body sides at top, bottom and center
- Optional panels and rack-mounting angles can be mounted anywhere along channels
- Oil-resistant door gasket attached with oil-resistant adhesive and held in place with steel retaining strips
- Bonding provision on door; grounding studs on body
- Accessory mounting channel provided in enclosure top

**FINISH**

Enclosures are unpainted. Cover, sides, top and bottom have smooth #4 brushed finish. Optional steel panels, swing-out panels, side-mounted panels, rack-mounting frames, heavy-duty panel supports and center panel supports are painted white. Optional full, half and side-mounted conductive panels are available.

**ACCESSORIES**

- Electrical Interlocks
- Floor Stand Kit, Stainless Steel
- PANELITE Enclosure Lights
- Panel Support Kit
- Panels for Type 3R, 4, 4X, 12 and 13 Enclosures

**MODIFICATION AND CUSTOMIZATION**

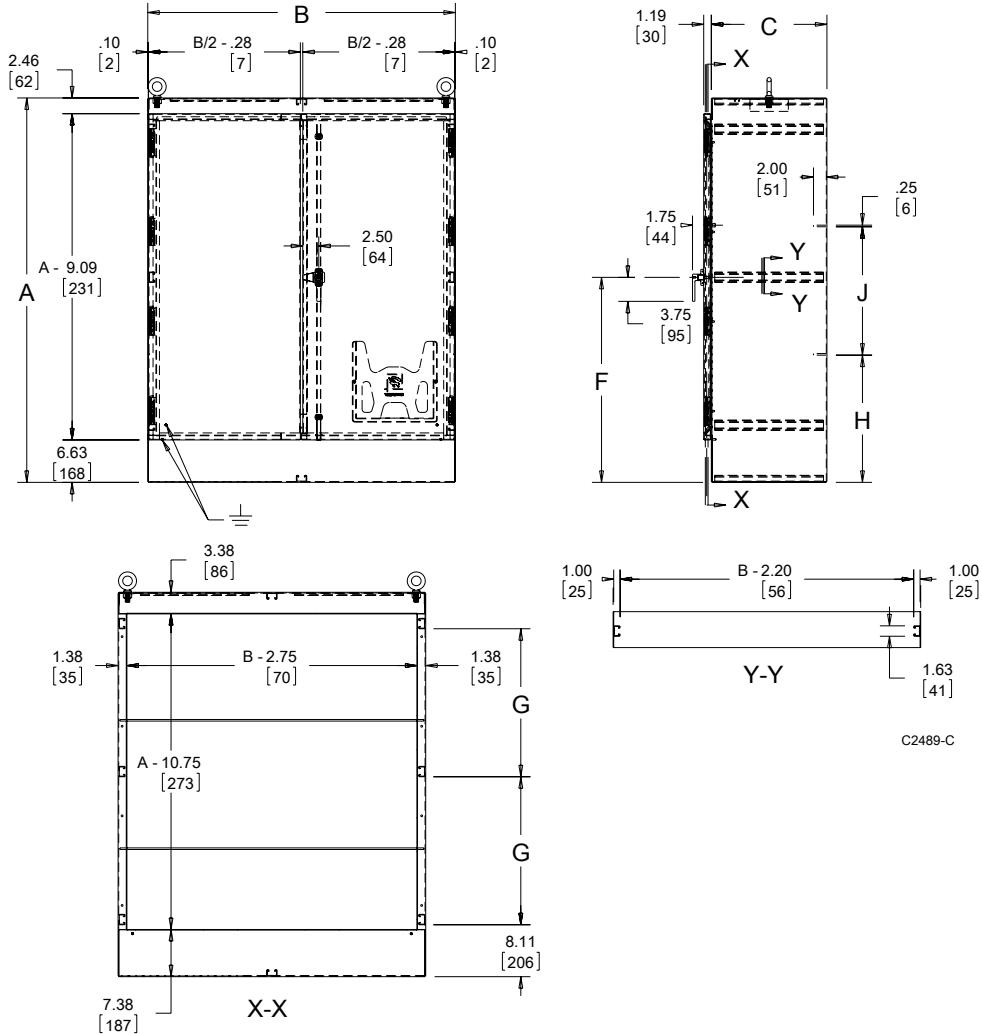
Hoffman excels at modifying and customizing products to your specifications. Contact your local Hoffman sales office or distributor for complete information.

**BULLETIN: A30S**

Standard Product

Catalog Number	AxBxC in./mm	F in./mm	G in./mm	H in./mm	J in./mm
A604818SSFSD	60.06 x 48.06 x 18.06	32.03	23.12	19.88	20.03
	1526 x 1221 x 472	814	587	505	509
A724818SSFSD	72.06 x 48.06 x 18.06	38.03	29.12	23.88	24.03
	1830 x 1221 x 472	966	740	607	610
A724824SSFSD	72.06 x 48.06 x 24.06	38.03	29.12	23.88	24.03
	1830 x 1221 x 611	966	740	607	610
A726018SSFSD	72.06 x 60.06 x 18.06	38.03	29.12	23.88	24.03
	1830 x 1526 x 472	966	740	607	610
A726024SSFSD	72.06 x 60.06 x 24.06	38.03	29.12	23.88	23.88
	1830 x 1526 x 611	966	740	607	607
A726036SSFSD	72.06 x 60.06 x 36.06	38.03	29.12	23.88	24.03
	1830 x 1526 x 916	966	740	607	610
A727218SSFSD	72.06 x 72.06 x 18.06	38.03	29.12	23.88	24.03
	1830 x 1830 x 472	966	740	607	610
A727224SSFSD	72.06 x 72.06 x 24.06	38.03	29.12	23.88	24.03
	1830 x 1830 x 611	966	740	607	610
A904820SSFSD	90.06 x 48.06 x 20.06	47.03	38.12	29.88	30.03
	2288 x 1221 x 510	1195	968	759	763
A907220SSFSD	90.06 x 72.06 x 20.06	47.03	38.12	29.88	30.03
	2288 x 1830 x 510	1195	968	759	763
A907224SSFSD	90.06 x 72.06 x 24.06	47.03	38.12	29.88	30.03
	2288 x 1830 x 611	1195	968	759	763
A907236SSFSD	90.06 x 72.06 x 36.06	47.03	38.12	29.88	30.03
	2288 x 1830 x 916	47.03	968	759	763

Purchase panels and accessories separately.



C2489-C