



**CONNECT AND PROTECT**

**TRUSTED DATA CENTER AND  
NETWORKING SOLUTIONS  
FOR A CONNECTED WORLD**

CADDY ERICO HOFFMAN RAYCHEM SCHROFF TRACER





# Connected World

EVERY THING IS BECOMING CONNECTED AND GETTING FASTER!

## FROM THE EDGE TO THE CLOUD

**Trust in nVent to secure mission critical data availability combined with optimized efficiency at minimal cost of ownership.**

The speed of changing technology creates significant new challenges for connecting and protecting data center and network infrastructure. Achievements of increased processing capacity, higher data latency and reduced operational costs are met with both expected and unexpected consequences. Multi-vendor systems create complexity. Busy connection pathways are stressed to their limits and new security threats emerge daily.

Ever-expanding IT and communication requirements demand remote equipment solutions in places where they never existed.

The highest amount of data and network availability is crucial in today's connected world. Our broad portfolio provides design flexibility and protection.



**Ensure uptime of your infrastructure**



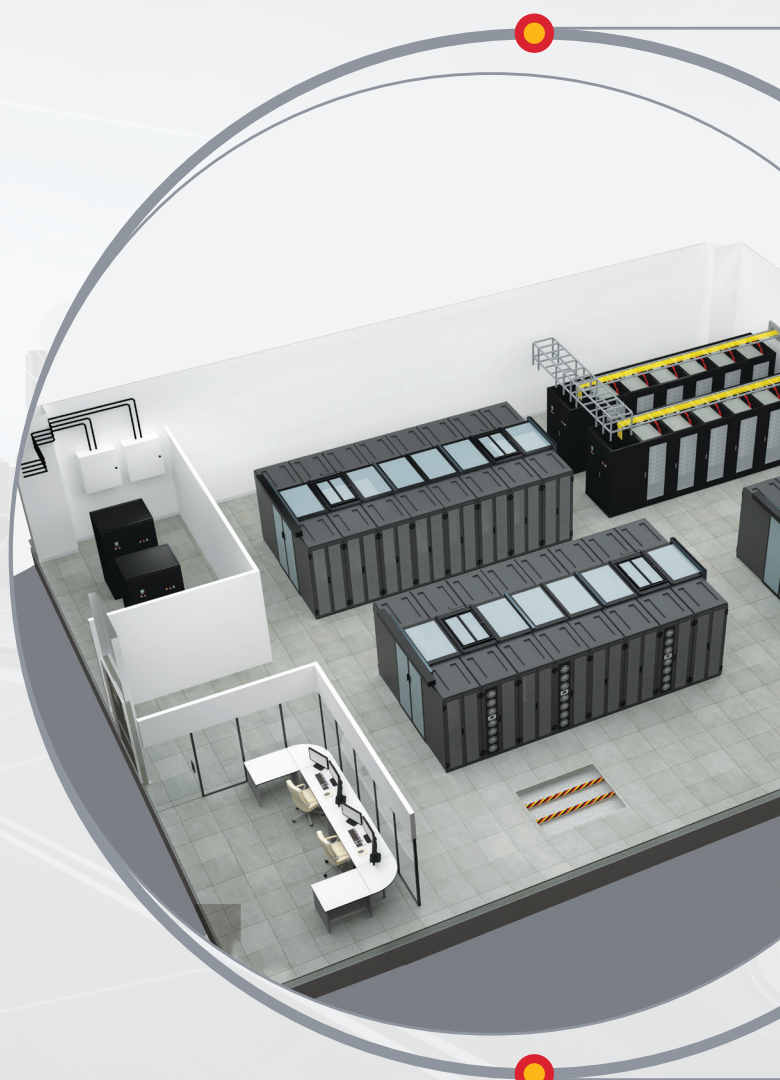
**Reduce planning and installation time**



**Minimize the operational costs**



**Maximize resources with service and support**







# Global Presence and Regional Support

ESTABLISHED AS ONE OF THE BEST

## SAFETY

nVent manufacturing processes are conducted in accordance with ISO 9001 ensuring maximum operating efficiency for our manufacturing & assembly facilities.

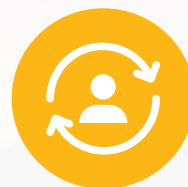


## QUALITY

nVent solutions are designed according to regional and national safety standards.



**CUSTOMERS  
ALWAYS COME  
FIRST**



## SUPPORT

nVent experts to support you on-site all around the globe.



## INNOVATION

nVent connects and protects mission critical infrastructure and personnel by delivering tailored solutions based on our customer's challenges.

OUR MODULAR AND BROAD PORTFOLIO COMBINED WITH DESIGN AND PROJECT SUPPORT ENABLES YOU TO SPECIFY AND DEPLOY YOUR PROJECT ON TIME TO ENSURE DATA AND NETWORK INFRASTRUCTURE AVAILABILITY AND PROTECTION.





nVent CADDY includes fixing, fastening, and support products for high performance cabling systems designed to save installation time.

#### CADDY

#### RAYCHEM

nVent RAYCHEM TraceTek leak detection solutions pinpoint the source of water and fuel leaks, providing you with critical information to take swift action and avoid damage.

nVent ERICO offers a full range of facility electrical protection products to protect data centers, network and other facilities.

#### ERICO

nVent HOFFMAN offers a broad range of targeted networking enclosures and racks for protecting sensitive electronic equipment.

#### HOFFMAN

#### SCHROFF

nVent SCHROFF brand offers modular and scalable server cabinets, aisle containment systems and active cooling solutions to perfectly fit customers' data center requirements.



**80+**

Manufacturing, service, sales and distribution centres

**30M+**

nVent enclosures in use globally

**400+**

Patents

**9000**

Global Workforce



Manufacturing Sites



# Data Centers

## PROTECTION FOR SMALL TO HYPERSCALE DATA CENTERS



### SMART SERVER RACKS

- Welded steel frame with static load 1,600 kg / 3,525 lbs.
- Modular customizable platforms
- 42RU, 47RU & 52RU standard heights, custom available
- 1000/1200 mm standard depths, custom available
- Colocation, seismic and NEMA rated cabinets available

#### SMART CABLE MANAGEMENT

- Flexible accessories for different cabling zones



### SMART MONITORING

- 24/7 monitoring of environment, power and cooling
- Minimum amount of IP ports

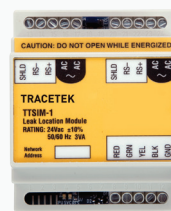
#### ACCESS CONTROL

- Handle with integrated card reader supporting various transponder signals
- Central management of user rights, access and alerts



### SMART LEAK DETECTION

- Pinpoint water and fuel leak
- Robust and reliable conductive sensing cables
- Interchangeable components allows modular configurations
- Advanced control and alarm panels



### SMART RACK POWER

#### BASIC PDUs

- Provide convenient, reliable power to equipment
- Rack- and panel-mount models available

#### I-PDUs

- Metered and switched solutions in single and three phase versions
- Hot-pluggable meter and field replaceable PSU
- Metering accuracy within +/-1%



CADDY ERICO HOFFMAN RAYCHEM SCHROFF TRACER





## SMART CONTAINMENTS

- Modular components to optimize data center air flow
- Designed to support different fire suppression systems
- 3 different door options: swing door, manual and automatic sliding doors
- Design allows easy integration of third party cabinets



## SMART PRECISION AND HIGH DENSITY LIQUID COOLING

### IN-ROW

- Fully compatible with Aisle Containment System
- Redundant power supplies
- Networked cooling devices allow efficient regulation and minimize risk



Optimized for up to  
25kW per Rack

### IN-RACK

- Efficient solution for decentral applications
- 1, 2 or more closed-loop cabinet designs possible
- IP/EMC (EMI) shielded versions possible



Optimized for up to  
25kW per Rack

### REAR DOOR COOLER

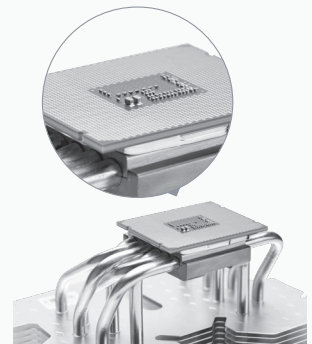
- HPC cooling
- Frame design separates cooling from the rear inside of the rack
- Attachable to third party racks (also retrofit)



Optimized for  
25 to 80kW per Rack

### HIGH DENSITY LIQUID COOLING

- Cooling on component level
- Secure due to superior manufacturing expertise and high quality components



Optimized for extreme high  
densities 40kW - 500kW





# Commercial Networks

## PROTECTION FOR NETWORKS IN BUILDINGS, CAMPUS AND INDUSTRIAL FLOOR SPACE



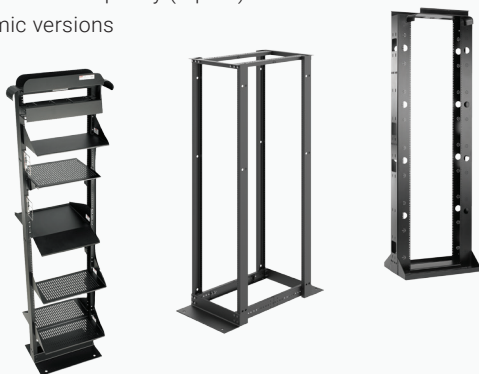
### SMART NETWORKING ENCLOSURES

#### WALL-MOUNT ENCLOSURES

- Double-hinged or single-door enclosures
- Front and rear access to 19-in. rack-mounted equipment
- Protection against water, dirt, corrosive agents and other contaminants
- Broad range of sizes, materials and configurations
- Easy, one person installation

#### 2- AND 4-POST OPEN FRAME RACKS

- Strong aluminum construction with RU markings on front and rear
- 4-post has adjustable depth for maximum versatility
- 2- and 4-post racks can be ganged
- 2500-lb. load capacity (4-post)
- Seismic versions



#### FREE STANDING CABINETS

- Broad range of pre-engineered configurations for passive network equipment, core switches and server assembly
- Solutions for low and high cable as well as cooling densities
- 4 different widths, 4 different depths and fully compatible accessories



### SMART CABLE MANAGEMENT

#### CABLETEK CABLE MANAGER

- Single- or double-sided models available
- Mounts on sides of or between 2- and 4-post open frame racks
- Front side provides support, management and high capacity for patch cords
- Back side supports Cat 5e, 6, 6A and fiber optic cables

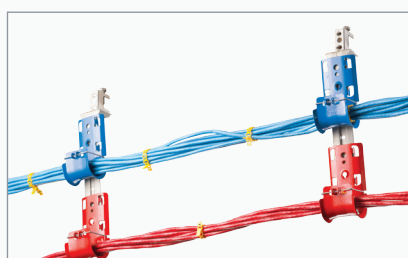




## SMART FASTENING AND FIXING

### CAT HP J-HOOK SYSTEM

- Advanced, non-continuous pathway support solution
- One-person installation
- No grounding and bonding
- Multiple color options
- Fire rated



### ROD LOCK

- Fast, easy and secure installations
- "Push-to-install" design
- Prefabricated (multi-level trapeze) assemblies
- Telescoping strut eliminates the need for cutting and preparing sections



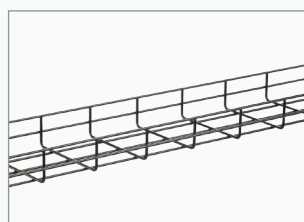
### SPEED LINK

- Universal overhead support system for time saving installation
- Complete systems for easy fastening to different building structures
- Unique push/pull keyless release enables easy adjustments
- Fire rated



## SMART CABLE SUPPORT AND PATHWAYS

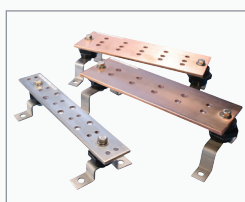
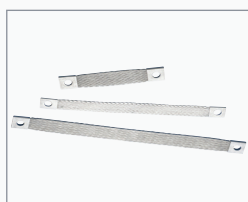
- Ceiling mounted and under floor configurations
- Easy access for maintenance
- Flexible line of components and accessories



## SMART GROUNDING AND BONDING

### GROUNDING AND BONDING

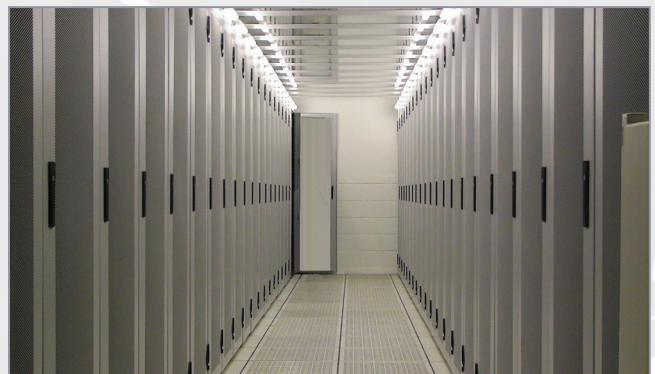
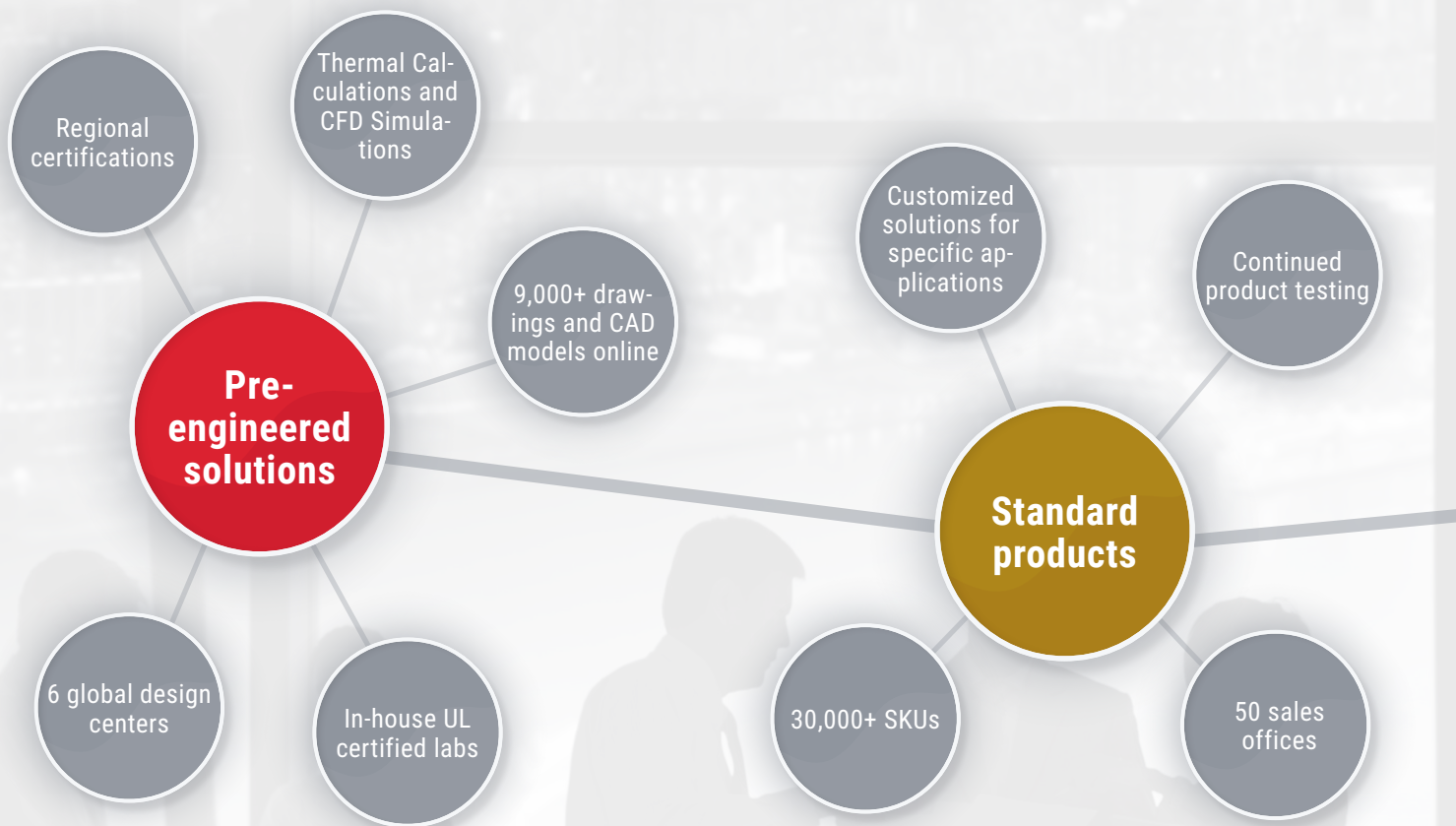
Full range of facility electrical protection products to protect data centers, network and other facilities



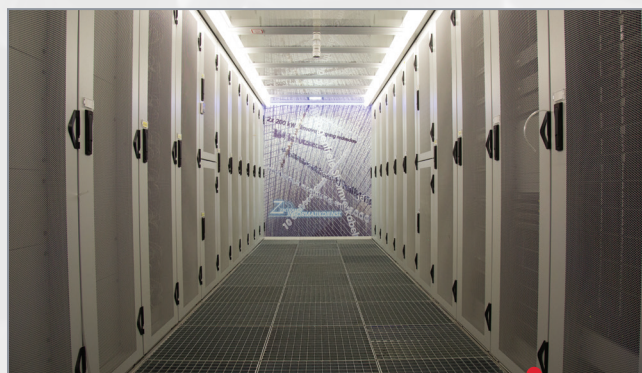


# Work with Experts

## TO GET THE BEST FITTING SOLUTION



CADDY ERICO HOFFMAN RAYCHEM SCHROFF TRACER





## Europe

<b>Straubenhardt, Germany</b>	Tel: +49.7082.794.0
<b>Betschdorf, France</b>	Tel: +33.3.88.90.64.90
<b>Warsaw, Poland</b>	Tel: +48.22.209.98.35
<b>Hemel Hempstead, Great Britain</b>	Tel: +44.1442.24.04.71
<b>Assago, Italy</b>	Tel: +39.02.5776151.224

## North America

<b>All locations</b>	Tel: +1.800.525.4682
----------------------	----------------------

## Middle East & India

<b>Dubai, United Arab Emirates</b>	Tel: +971.4.378.1700
<b>Bangalore, India</b>	Tel: +91.80.6715.2001
<b>Istanbul, Turkey</b>	Tel: +90.216.250.7374

## Asia

<b>Shanghai, China</b>	Tel: +86.21.2412.6943
<b>Qingdao, China</b>	Tel: +86.532.8771.6101
<b>Singapore</b>	Tel: +65.6768.5800
<b>Shin-Yokohama, Japan</b>	Tel: +81.45.476.0271

Our powerful portfolio of brands:

**CADDY   ERICO   HOFFMAN   RAYCHEM   SCHROFF   TRACER**



**nVent.com**