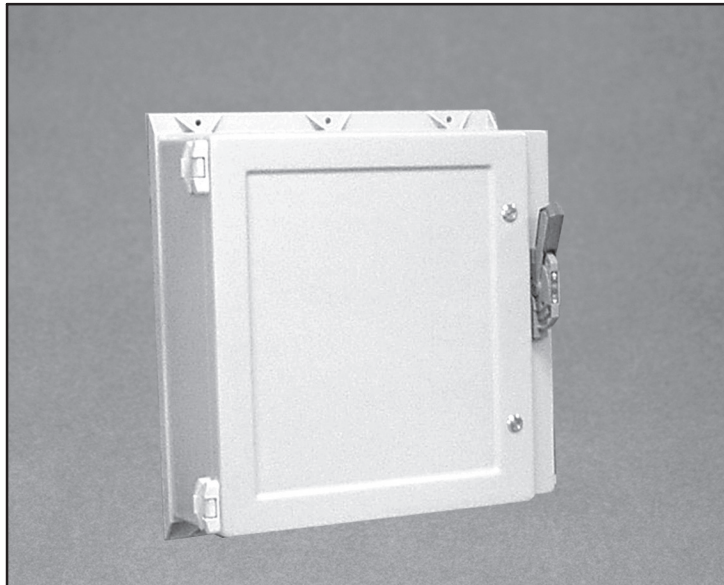




HOFFMAN

For Variable Depth Disconnect Devices
And For Flexible Cable Disconnect Devices
Hoffman Wall-Mounted Disconnect Enclosures (Fiberglass)



INSTALLATION STEPS

- Step 1** - Drill mounting holes in panel for specific disconnect device being installed, see Figure 2. See disconnect manufacturer's instructions.
- Step 2** - Install operating handle on enclosure flange in holes provided. Follow disconnect manufacturer's instructions.
- Step 3** - Install disconnect device on panel. Follow disconnect manufacturer's instructions for installation and adjustment.
- Step 4** - Install door catch (furnished by disconnect manufacturer) on the bracket that is welded or bonded to the inside of Hoffman disconnect enclosure door, see Figure 1. The disconnect manufacturer's door catch bracket is not required. See disconnect manufacturer's instructions regarding how to adjust door catch to properly interlock with the disconnect operating handle.

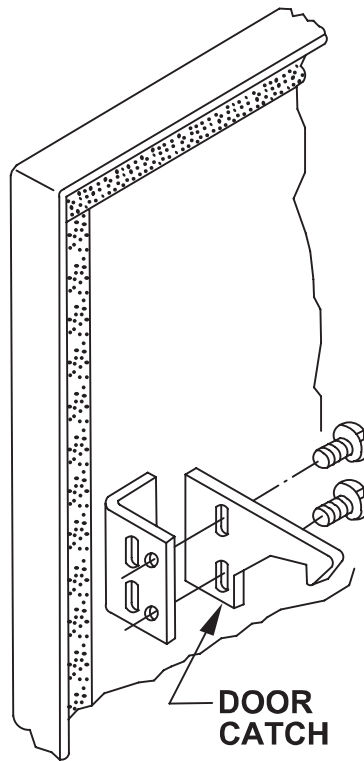
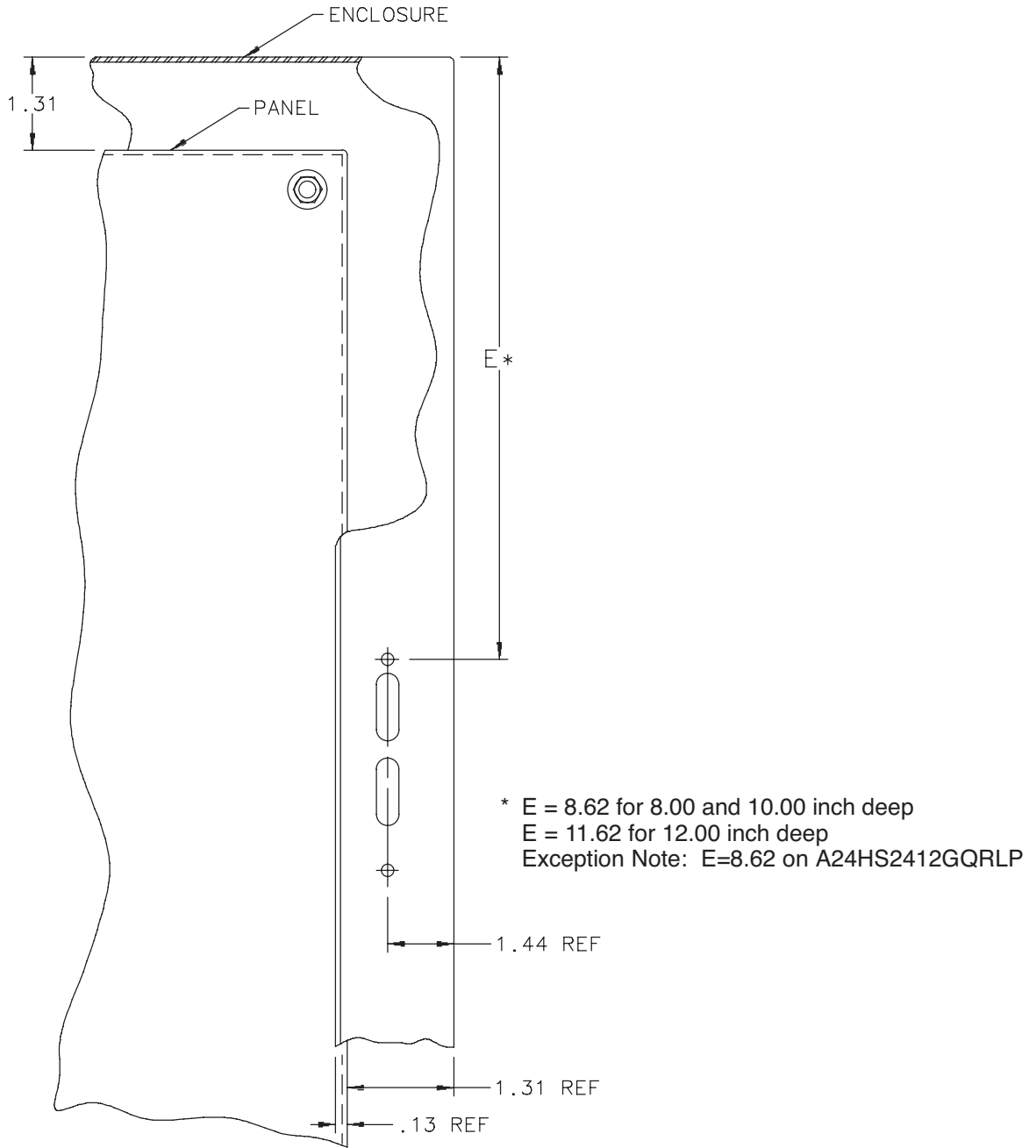


Figure 1

Disconnect Enclosures



NOTE: Please refer to disconnect manufacturer's instructions for the mounting locations on the panel.

Figure 2



HOFFMAN