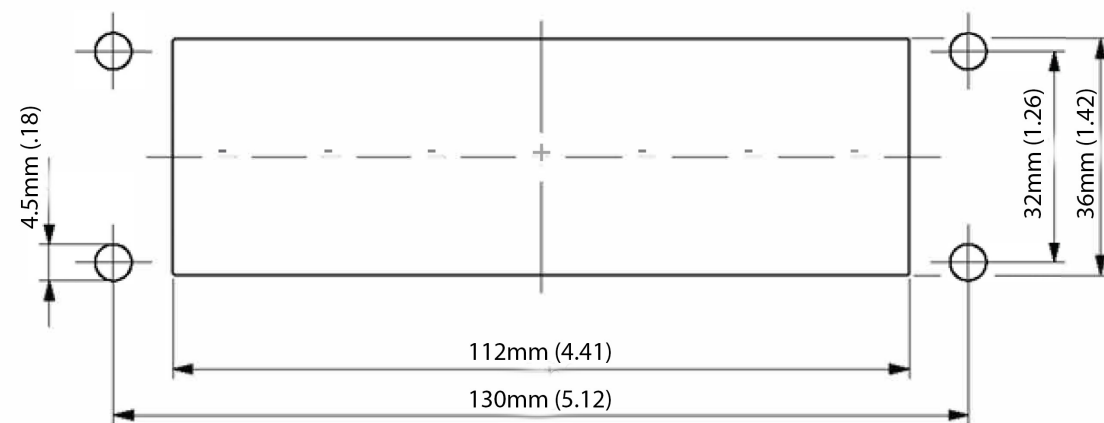




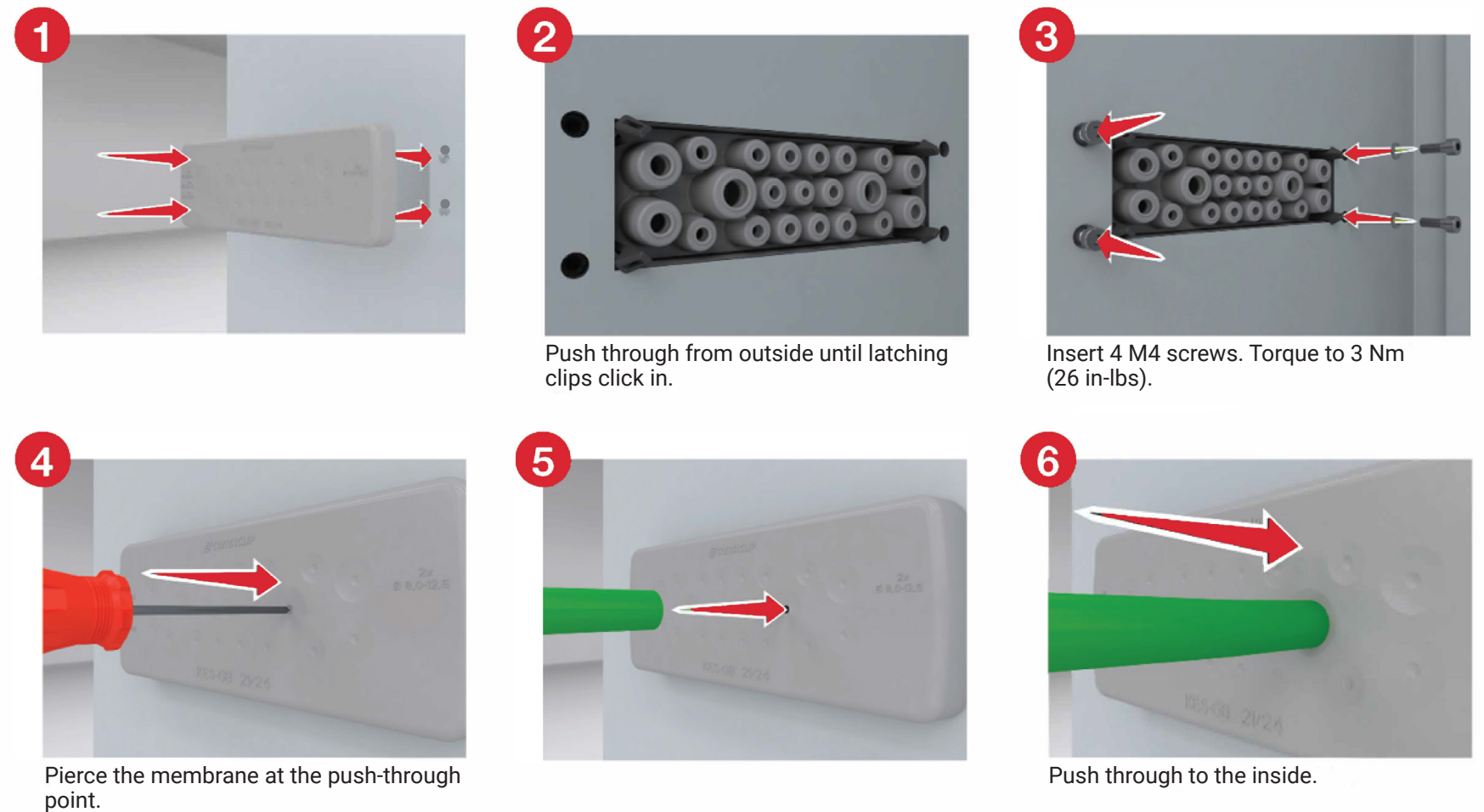
Cable Entry Systems
Cable Entry Gland Plate Rectangular, CEPH
(Screw-on mount from the inside.)

Screw-on mount from the inside.

PRODUCT DATA



INSTALLATION



According to UL Standard 508A, the following Conditions of Acceptability apply:

NEMA Type 4/4X

Only applies when the CEPH variant is secured with screws and the cables/wires have max. diameter of the pierced membrane holes.

NEMA Type 1

When the CEPH variant is secured with screws and fitted with smaller cables/wires.

NEMA Type 1

For all CEPH variants secured only by latching clips.