

EXTREME ENVIRONMENTS AIR CONDITIONER



INDUSTRY STANDARDS

UL/cUL Listed; Type 12, 3R, 4; 4X optional; File No. SA6453

CE
EAC
IP66/IP69 Internal Loop
IP34 External Loop
Telcordia GR-487 capable

APPLICATION

- Food and Beverage
- Energy
- Water and Wastewater
- Mining and Metal Manufacturing
- Oil and Gas
- And more

FEATURES

- Energy-efficient rotary compressor
- R134A refrigerant
- 115, 230 VAC power input
- UL Listed to save customers time and money with agency approvals
- Exterior mounting
- Reliable Smart Controller on enclosure side of the unit
- 10-degree sloped top shroud, welded and ground
- Sloped internal surfaces reduce catchpoints for water, dust, bacteria build-up
- FDA-approved neoprene gasket
- No louvers on vertical surfaces allow washdown with minimal protections
- Minimal (2) fasteners on front of shroud allow easy removal even when mounted next to a wall
- Cutout Adapter options for enclosures with older nVent HOFFMAN or Competitive units for easy transitions to new air conditioners
- Cleanable, reusable aluminum mesh filter included to protect coils for maximum cooling performance in dirty environments
- Mounting hardware, gaskets and user manual furnished with the unit
- Every unit functionally tested before shipping
- Standard Air Conditioner models also include:
 - Active condensate management with heater strip
 - Power-off capability for door switch and other system requirements
 - Malfunction switch
 - Corrosion-resistant coating on condenser coil
 - Compressor heater

- Head pressure control
- Temperature range from -40 F/-40 C to 131 F/55 C
- Visit web address for more information regarding SpectraCool Remote Access Control (RAC)
<http://hoffman.nvent.com/en/hoffman/SPECTRACOOLRemote-Access-Control-472042>

FINISH

- Stainless steel Type 304 #4 brushed

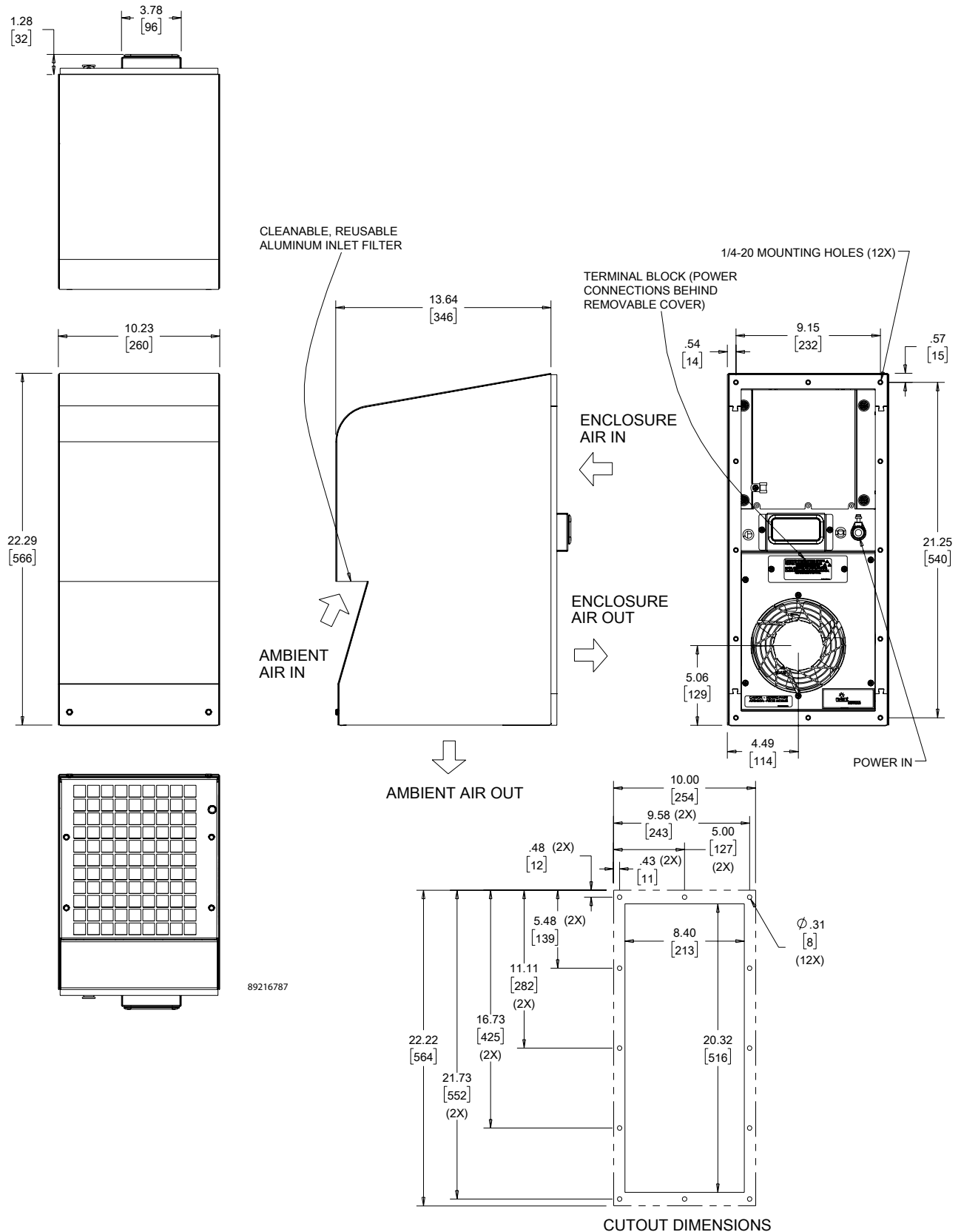
ACCESSORIES

- Optional Remote Access Control - field installable
- Optional ACP (Advanced Corrosion Protection), Level 2 available
- Optional 350 watt heater



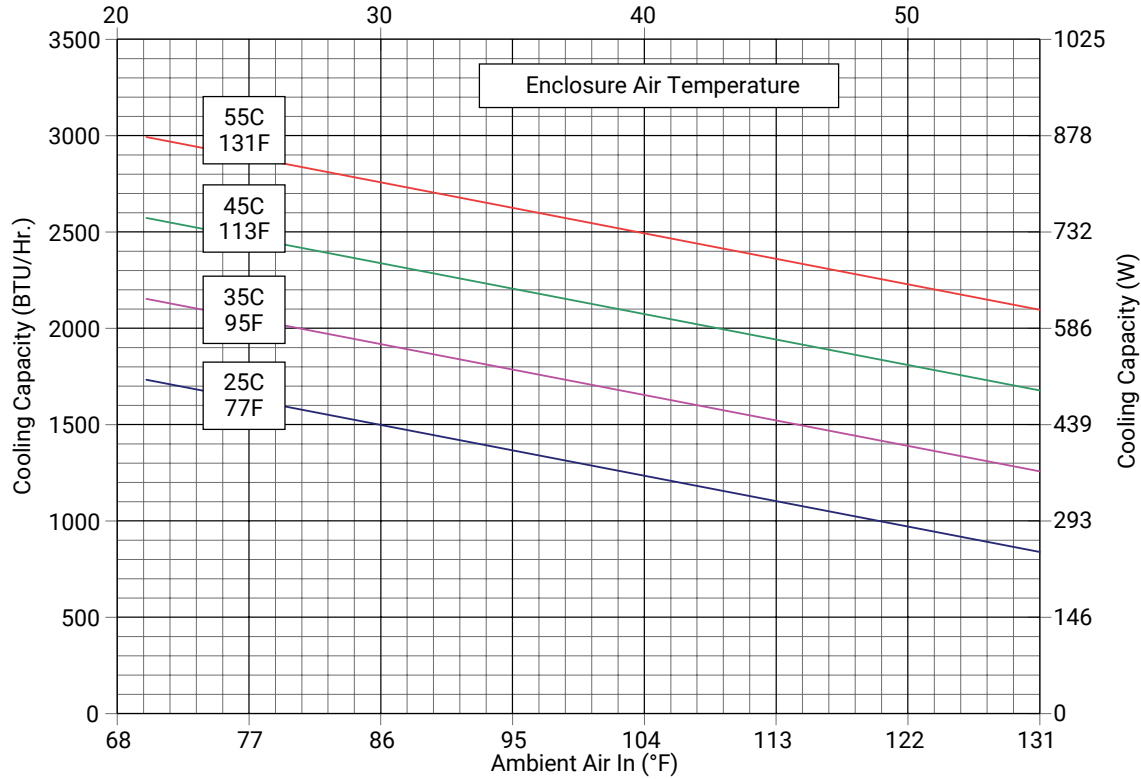
Performance Data **X23 2000 BTU/Hr (586 Watt)**

CATALOG NUMBER		
Indoor/Outdoor Model, Smart Controller	X230216G170	X230226G170
Indoor/Outdoor Model, Smart Controller, Heat Pkg	X230216G160	X230226G160
Indoor/Outdoor Model, Smart Controller, ACP L2	X230216G370	X230226G370
Indoor/Outdoor Model, Smart Controller, Heat Pkg, ACP L2	X230216G360	X230226G360
COOLING PERFORMANCE		
Nominal:		
BTU/Hr.	2100/2300	1760/1890
Watts	615/675	515/550
At 131 F/131 F (55 C/55 C):		
BTU/Hr. (50/60 Hz)	2100/2300	1760/1890
W (50/60 Hz)	615/675	515/550
At 95 F/95 F (35 C/35 C):		
BTU/Hr. (50/60 Hz)	1900/2100	1800/1900
W (50/60 Hz)	555/615	530/555
Refrigerant	R-134A	R-134A
Refrigerant Charge (ounces/grams)	8.0/227	6.5/184
Operating Temperature Range:		
Maximum (°F/°C)	131/55	131/55
Minimum (°F/°C)	-40/-40	-40/-40
Airflow at 0 Static Pressure:		
Internal loop 50 Hz (CFM / m ³ /hr.)	65/110	65/110
External loop 50 Hz (CFM / m ³ /hr.)	139/236	139/236
Internal loop 60 Hz (CFM / m ³ /hr.)	78/133	78/133
External loop 60 Hz (CFM / m ³ /hr.)	160/272	160/272
Max. Heater W (Outdoor Models)	350	350
ELECTRICAL DATA		
Rated Voltage	110/115	220/230
Frequency (Hz)	50/60	50/60
Operating Range	+/- 10%	+/- 10%
Max. Power Consumption (W at 50/60 Hz)	700	660
Max. Nominal Cooling Current (A at 50/60 Hz)	6.8/6.3	2.8/2.9
Max. Nominal Heating Current (A at 50/60 Hz)	3.3/3.5	1.7/1.8
Starting Current (A)	15.2	5.8
Agency Approvals	UL/cUL Listed CE, UKCA EAC	UL/cUL Listed CE, UKCA EAC
Power Input Description	Terminal block	Terminal block
ENCLOSURE PROTECTION		
UL Type	Type 12, 3R, 4X	
IEC Type Rating	IP66 and IP69	
CONTROLLER		
Description	Smart Controller	
Thermostat Location	Enclosure Side	
Factory Thermostat Setting (°F/°C)	80/27	
SOUND LEVEL		
At 1.5 Meters	66 dB(A)	
UNIT CONSTRUCTION		
Material	Stainless Steel 304	
Finish	#4 Brushed	
UNIT DIMENSIONS		
Height (in./mm)	23.0/584	23.0/584
Width (in./mm)	10.2/259	10.2/259
Depth (in./mm)	14.7/373	14.7/373
Weight (lb./kg)	65/30	65/30

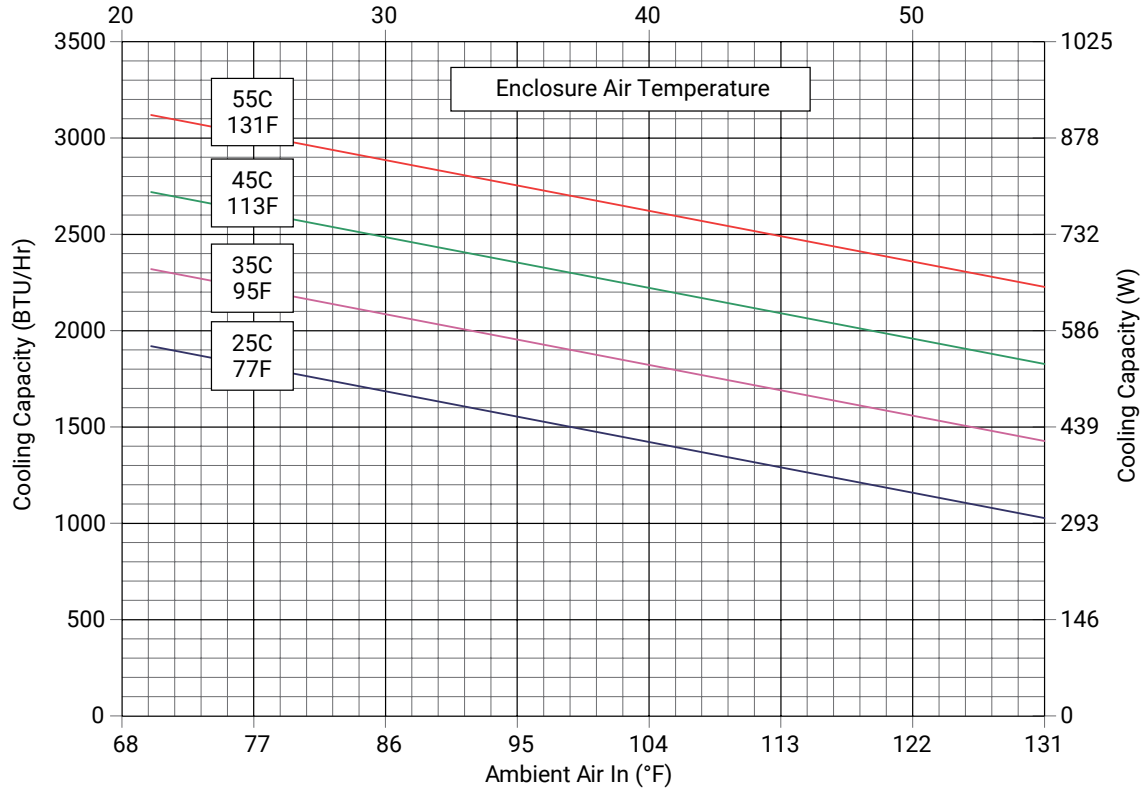


Visit www.nVent.com/HOFFMAN to download 2D and 3D CAD drawings into the overall design of your electrical system.

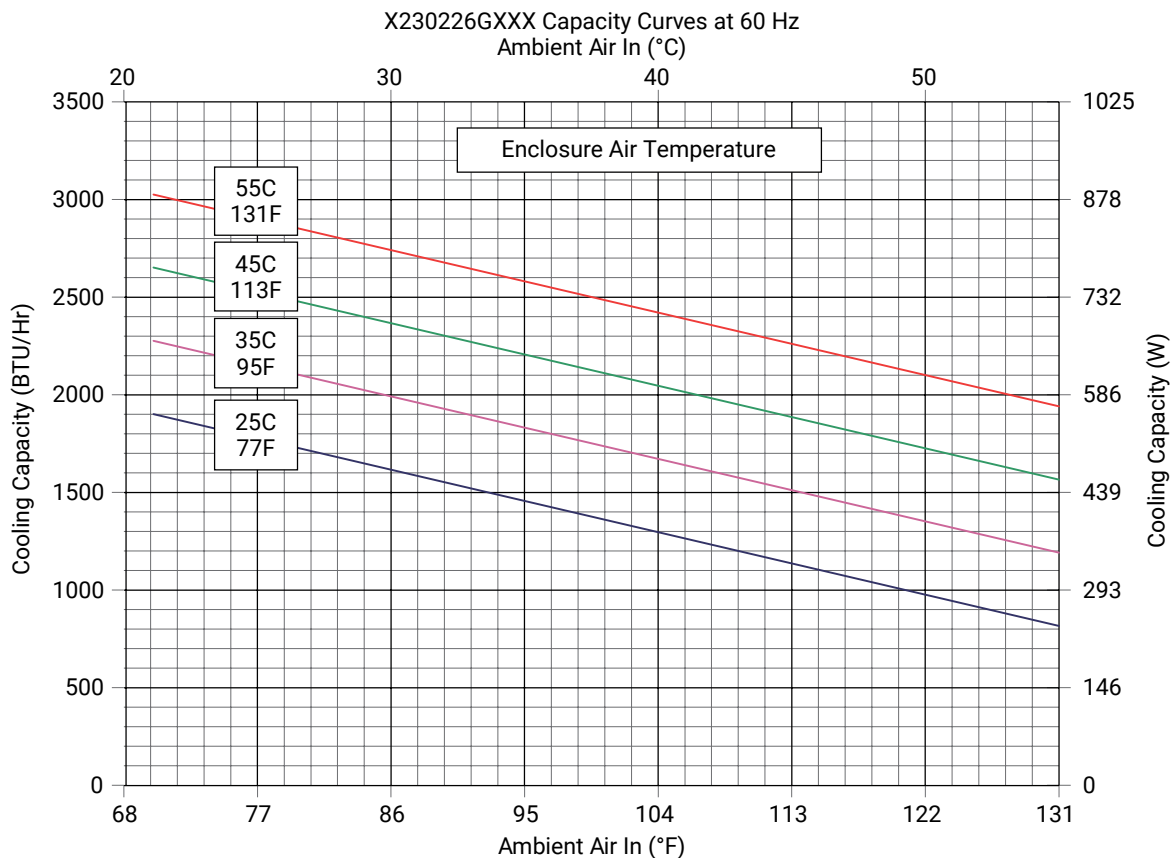
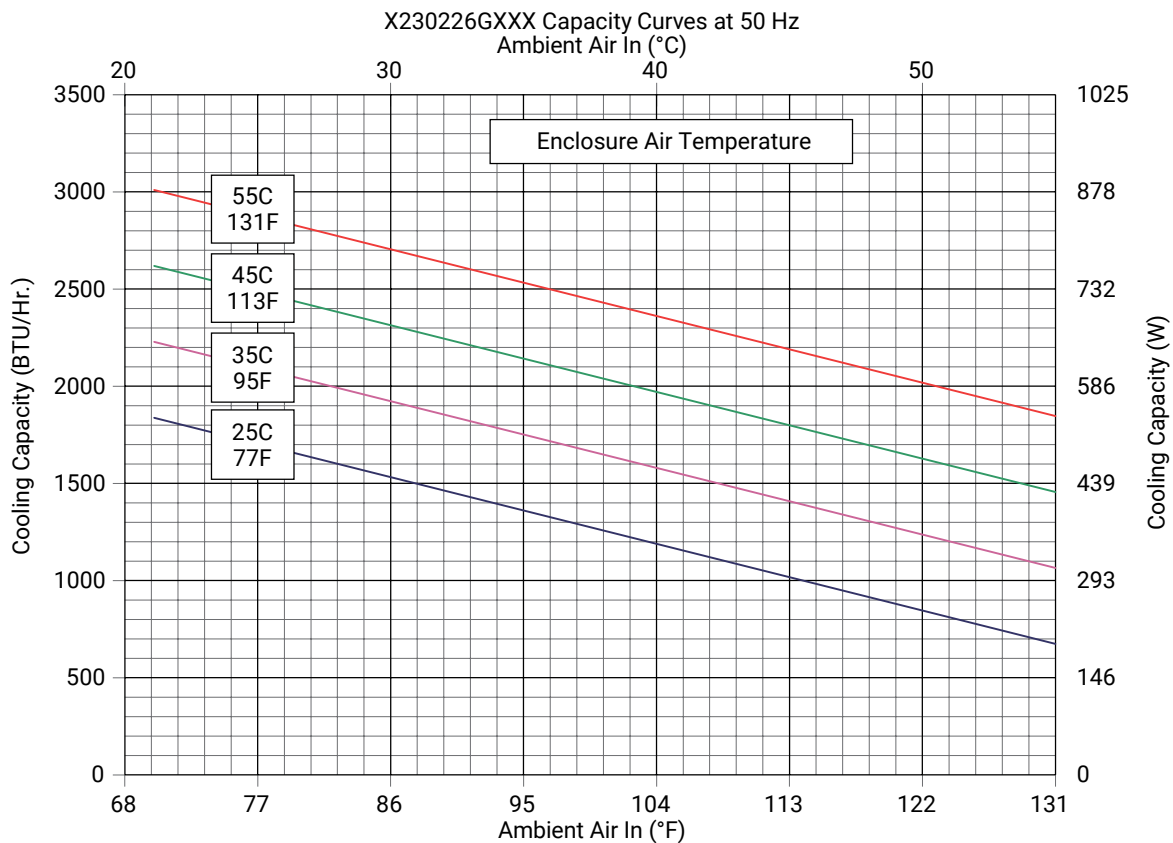
Performance Curves for X23 Models 2300 BTU/Hr. (675 Watt)
X230216GXXX Capacity Curves at 50 Hz
Ambient Air In (°C)



X230216GXXX Capacity Curves at 60 Hz
Ambient Air In (°C)



Performance Curves for X23 Models 1890 BTU/Hr. (550 Watt)



Notes