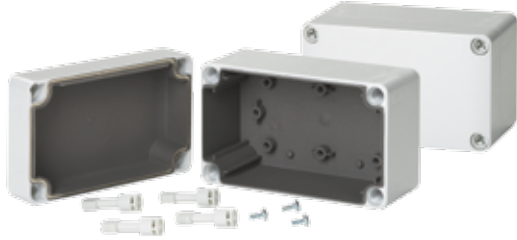


QLINE E, EMC, TYPE 4X



INDUSTRY STANDARDS

UL 508A Listed; Type 4, 4X, 12, 13; File No. E61997
 cUL Listed per CSA C22.2 No 94: Type 4, 4X, 12, 13; File No. E61997
 Enclosure flammability evaluated per UL 508A

NEMA/EEMAC Type 4, 4X, 12, 13
 IEC 60529, IP66

APPLICATION

Medium-size QLINE E polycarbonate EMC enclosures have contoured bodies and flush cover screws for an attractive, contemporary appearance while also providing EMC protection in corrosive environments.

SPECIFICATIONS

- Body is impact-resistant polycarbonate
- EMC conductive coating in base and cover
- Gasket of silver/silicone
- Mounting holes molded directly under cover screws
- Screws provided for mounting optional panel
- Polycarbonate material is easily punched, drilled, filed or sawed
- Cross-point flush cover screws are strong, durable polyamide
- Mounting tracks along body side walls for PC card installation
- Molded internal pads for mounting optional panels, rails and other components

FINISH

Enclosure material is RAL 7035 light-gray outside. Optional panels are conductive steel.

BULLETIN: Q41EM

Standard Product

| Catalog Number | AxBxC mm/in. | External Dimensions L x W mm/in. | Internal Dimensions A x B x C mm/in. | Panel | Panel Size D x E mm/in. | Mounting G x H mm/in. | F mm/in. | K mm/in. | P mm/in. | Q mm/in. | S mm/in. | T mm/in. | W mm/in. | X mm/in. |
|----------------|--------------------------------------|----------------------------------|--------------------------------------|---------|--------------------------|--------------------------|------------|------------|-------------|-------------|-------------|------------|------------|------------|
| Q1388PCEMC | 125 x 75 x 74 4.92 x 2.95 x 2.91 | 125 x 75 4.92 x 2.95 | 119 x 69 x 67 4.67 x 2.70 x 2.65 | Q138PE | 98 x 48 3.86 x 1.89 | 110 x 60 4.33 x 2.36 | 61 2.38 | 25 0.98 | 40 1.57 | 75 2.95 | 90 3.54 | — | — | — |
| Q13138PCEMC | 125 x 125 x 74 4.92 x 4.92 x 2.91 | 125 x 125 4.92 x 4.92 | 119 x 119 x 67 4.67 x 4.67 x 2.65 | Q1313PE | 98 x 98 3.86 x 3.86 | 110 x 110 4.33 x 4.33 | 61 2.38 | 25 0.98 | 90 3.54 | 75 2.95 | 90 3.54 | — | 23 0.89 | — |
| Q131310PCEMC | 125 x 125 x 99 4.90 x 4.90 x 3.90 | 125 x 125 4.92 x 4.92 | 119 x 119 x 92 4.67 x 4.67 x 3.64 | Q1313PE | 98 x 98 3.86 x 3.86 | 110 x 110 4.33 x 4.33 | 86 3.37 | 25 0.98 | 90 3.54 | 75 2.95 | 90 3.54 | — | 23 0.89 | — |
| Q18138PCEMC | 175 x 125 x 74 6.89 x 4.92 x 2.91 | 175 x 125 6.89 x 4.92 | 169 x 119 x 67 6.63 x 4.67 x 2.65 | Q1813PE | 148 x 98 5.83 x 3.86 | 160 x 110 6.30 x 4.33 | 61 2.38 | 25 0.98 | 90 3.54 | 100 3.94 | 140 5.51 | 15 0.59 | 23 0.89 | — |
| Q181310PCEMC | 175 x 125 x 99 6.89 x 4.92 x 3.90 | 175 x 125 6.89 x 4.92 | 169 x 119 x 92 6.63 x 4.67 x 3.64 | Q1813PE | 148 x 98 5.83 x 3.86 | 160 x 110 6.30 x 4.33 | 86 3.37 | 50 1.97 | 90 3.54 | 100 3.94 | 140 5.51 | 15 0.59 | 23 0.89 | — |
| Q18188PCEMC | 175 x 175 x 74 6.89 x 6.89 x 2.91 | 175 x 175 6.89 x 6.89 | 169 x 169 x 67 6.63 x 6.63 x 2.65 | Q1818PE | 148 x 148 5.83 x 5.83 | 160 x 160 6.30 x 6.30 | 61 2.38 | 25 0.98 | 140 5.51 | 125 4.92 | 140 5.51 | — | 15 0.59 | 35 1.38 |

Purchase panels separately.

